

# BS1016

## DATASHEET/DATABLAD



TECHNICAL DATA BOILERS: BS1016

TEKNISKE DATA KEDLER: BS1016



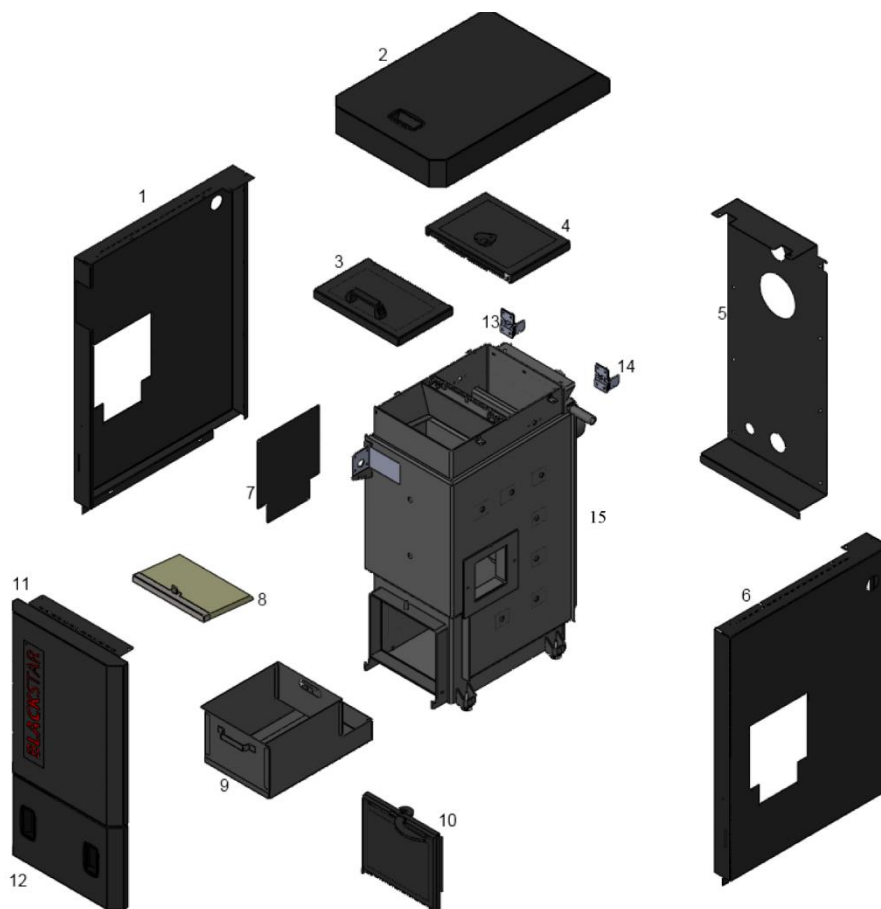
### Boiler BS1016 / Kedel BS1016

Height mm:	Højde mm:	1017
Width mm:	Brede mm:	450
Depth mm:	Dybde mm:	715
Weight kg:	Vægt kg:	212
Chimney mm:	Skorsten mm:	130
Lead:	Fremløb:	1 1/4"
Return:	Retur:	1 1/4"
Filling:	Pafyldning:	1/2"
Efficiency:	Virkningsgrad:	93,40%
EN class:	EN Klasse:	5
Effect:	Effekt:	14kW
300-ELAB-	300-ELAB-	1700



# DATASHEET/DATABLAD

## Boiler BS1016 / Kedel BS1016



SKU:	Parts:	Dele:
1	410163 Boiler cabinet side left BS1016	Kedelside BS1016, venstre
2	410164 Boiler cabinet top lid, BS1016	Toplåge, BS1016
3	440802 Boiler internal front top lid, BS1016	Toplåg intern foreste BS1016
4	440702 Boiler internal back top lid, BS1016	Toplåg intern bageste BS1016
5	410162 Boiler cabinet back BS1016	Kedel bagplade BS1016
6	410161 Boiler cabinet side right BS1016	Kedelside BS1016, højre
7	441102 Boiler cabinet side cover plate BS1016	Dækplade BS1016
8	441002 Skamol over burning chamber BS1016	Skamol brændkammer BS1016
9	440602 Ash can BS1016	Askeskuffe BS1016
10	440902 Ash can lid, BS1016	Askeskuffelåge, BS1016
11	410165 Boiler cabinet front top BS1016	Kedel frontlåge top BS1016
12	410166 Boiler cabinet front bottom BS1016	Kedel frontlåge bund BS1016
13	400435 Hinge, 50x70mm	Hængsel, 50x70mm
14	* Stop for toplid cover	Stop for toplåg
15	* Raw Boiler	Kedel

\* Bestillingsvarer: Kontakt salg@nbe.dk