

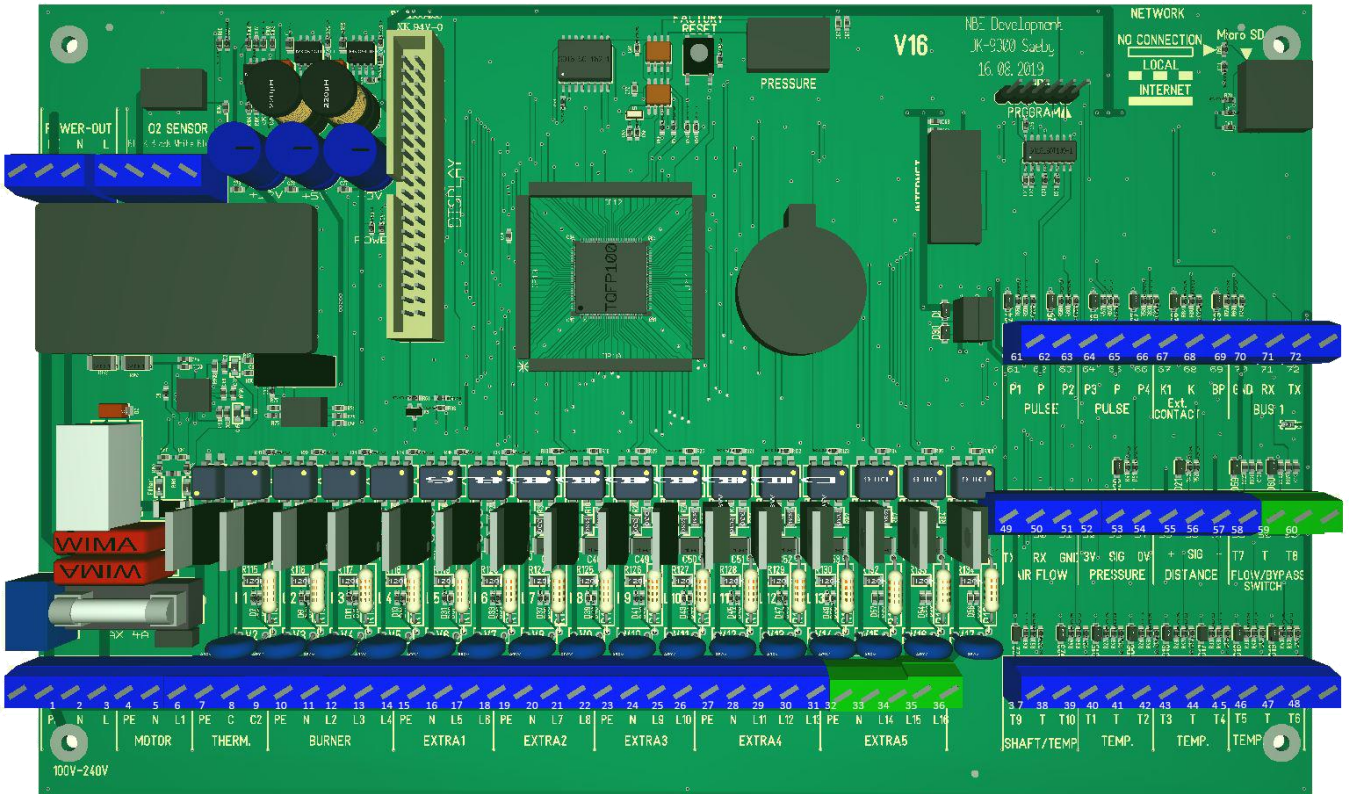
INSTALLING MOTOR VALVE WITH 12 PIN PLUG



L (Connect on 230 Volt AC)

N

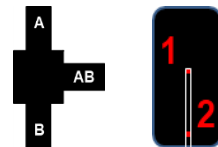
**On available output L12 – L16
or on Ext Mod U14-U20)**



Connecting print



1. Mount the 3-way valve on the flow from the boiler.
2. AB flow into the valve.
3. B for house/radiator/floor heating.
4. A to DHW.
5. The temperature sensor is to be mounted in the DHW tank. If it is mounted high (1), it will give less hot water, but fewer start-ups. If it is mounted low (2), it will give more hot water, but starts faster while tapping. That gives more start-ups/day.
6. Activate the output that has been chosen in the controller
7. Choose a wanted temperature in DHW in the controller



MOTORVENTIL MONTERING

12 POLET STIK



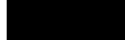
Tilslutning 230 Volt AC



L

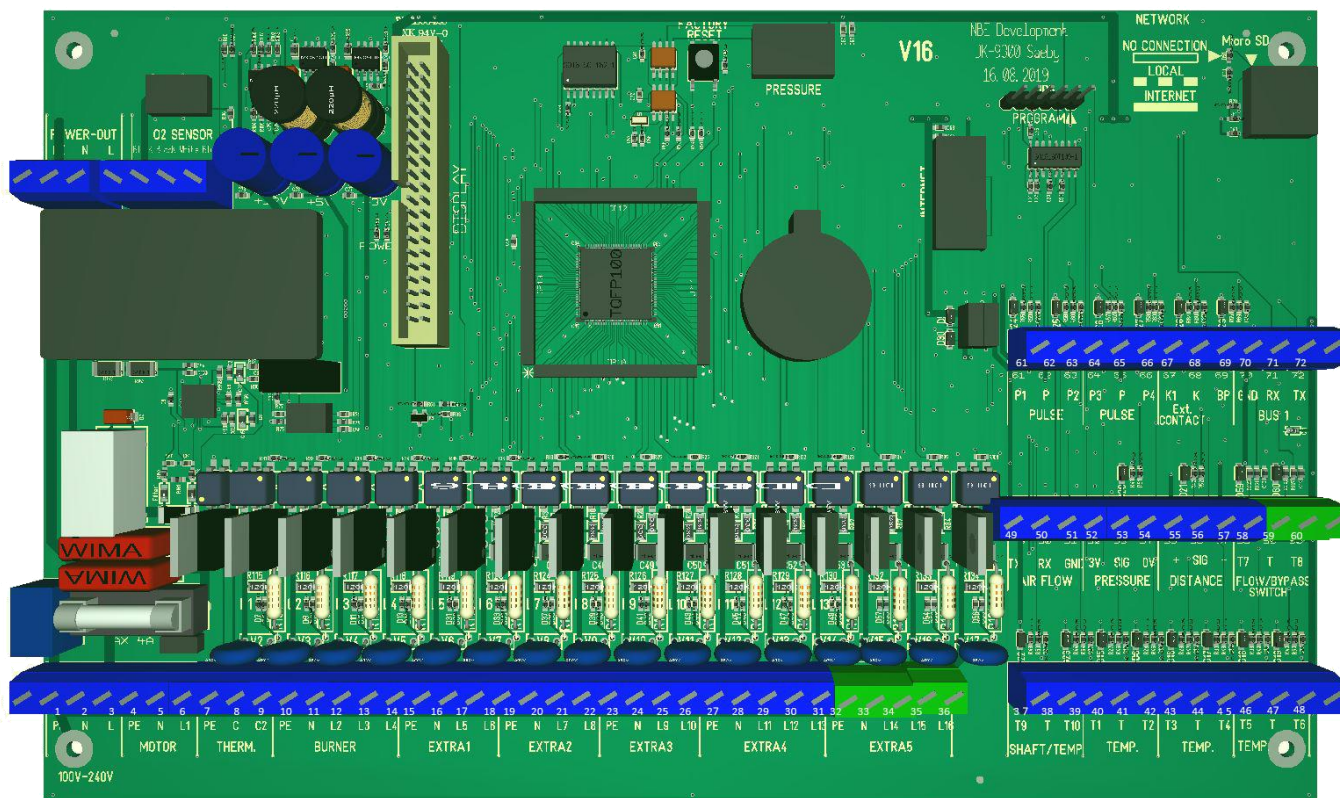


N



Fra L12-L16

U14-U20, er kun tilgængelige, hvis der er monteret udvidelsesprint til styringen



Skal aktiveres fra "forhandlerniveau"



Tilslutning Print

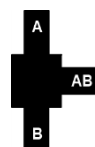


T



T4

1. Monter 3-vejs ventilen på fremløb fra kedlen
2. AB flow ind i ventil
3. B til hus/radiator/gulvarme
4. A til VVB



5. Temperatursensor monteres i VVB Monteres den højt (1) giver det mindre varmt vand, men færre opstartninger Monteres den lavt (2), er der mere varmt vand, men der startes hurtigere op ved tapping. Det giver flere opstartninger/dag
6. Aktiver udgang der er valgt i styringen
7. Vælg en ønsket temperatur i VVB i styringen